

THE AMERICAN NEPTUNE

Pictorial Supplement VII

A SELECTION OF
MARINE PAINTINGS
BY FITZ HUGH LANE

1804-1865

PUBLISHED BY THE AMERICAN NEPTUNE
SALEM, MASSACHUSETTS

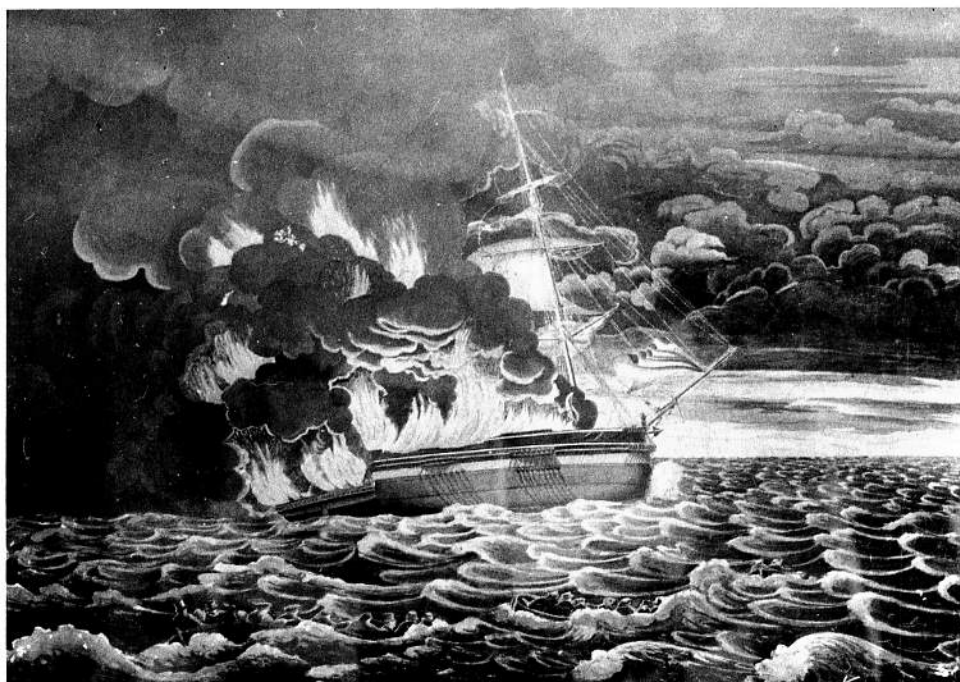
1965

THE AMERICAN NEPTUNE

Pictorial Supplement

Fitz Hugh Lane, 1804-1865

IN recent years the marines by Fitz Hugh Lane of Gloucester, Massachusetts, have passed into the realm of Fine Art with a corresponding rise in price. The artist has been the subject of many recent studies, the most complete being *Fitz Hugh Lane, American Marine Painter* by John Wilmerding, Salem, 1964. Through the kindness of Mr. Wilmerding a large selection of Lane's work is presented here using the titles and numbering adopted by the author. The arrangement with a few exceptions is roughly chronological.



186. The Burning of the Packet Ship *Boston*. Watercolor, 1830.

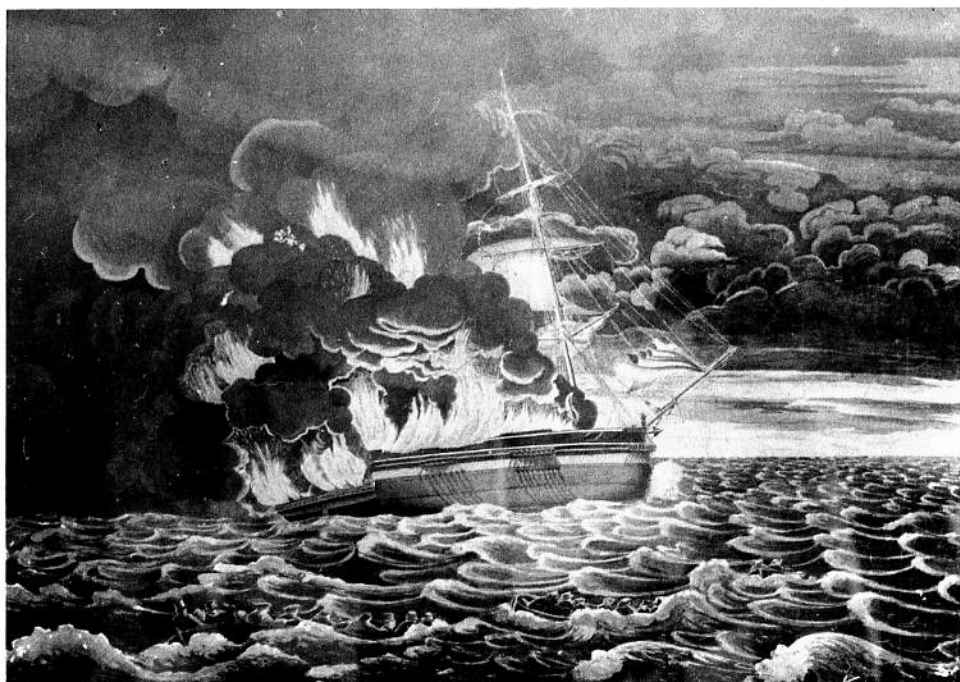
Courtesy, Cape Ann Scientific Literary and Historical Association.

THE AMERICAN NEPTUNE

Pictorial Supplement

Fitz Hugh Lane, 1804-1865

IN recent years the marines by Fitz Hugh Lane of Gloucester, Massachusetts, have passed into the realm of Fine Art with a corresponding rise in price. The artist has been the subject of many recent studies, the most complete being *Fitz Hugh Lane, American Marine Painter* by John Wilmerding, Salem, 1964. Through the kindness of Mr. Wilmerding a large selection of Lane's work is presented here using the titles and numbering adopted by the author. The arrangement with a few exceptions is roughly chronological.



186. The Burning of the Packet Ship *Boston*. Watercolor, 1830.

Courtesy, Cape Ann Scientific Literary and Historical Association.



143. View of the Town of Gloucester, Mass. Lithograph, 1830.
Courtesy, The Mariners Museum.



147. View of Gloucester, Mass. Lithograph, 1837.
Courtesy, The Essex Institute.



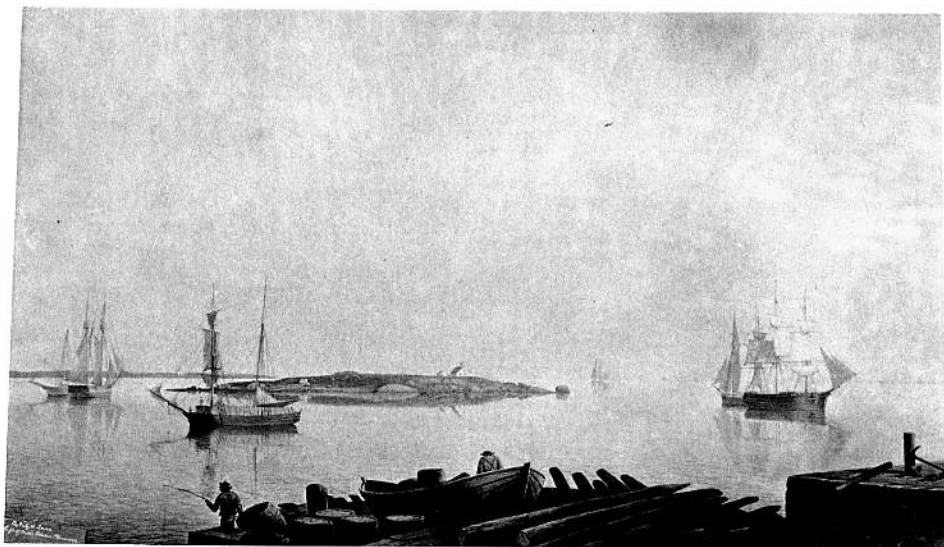
167. View of Gloucester from Rocky Neck. Lithograph, 1845.

Courtesy, The Mariners Museum.

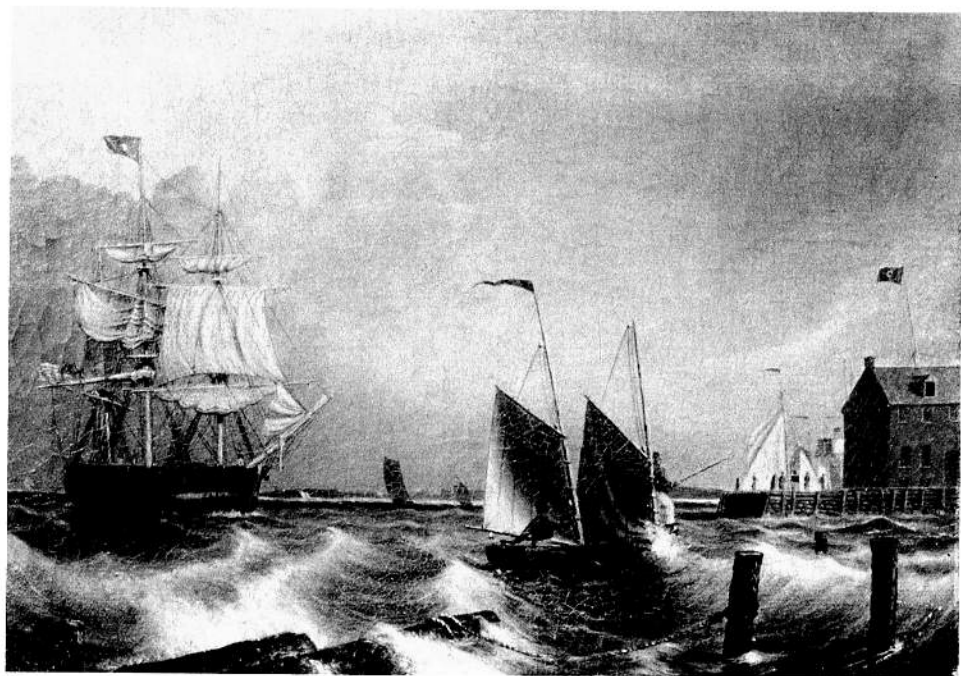


2. Salt Island, Gloucester, Mass. Oil, 1840.

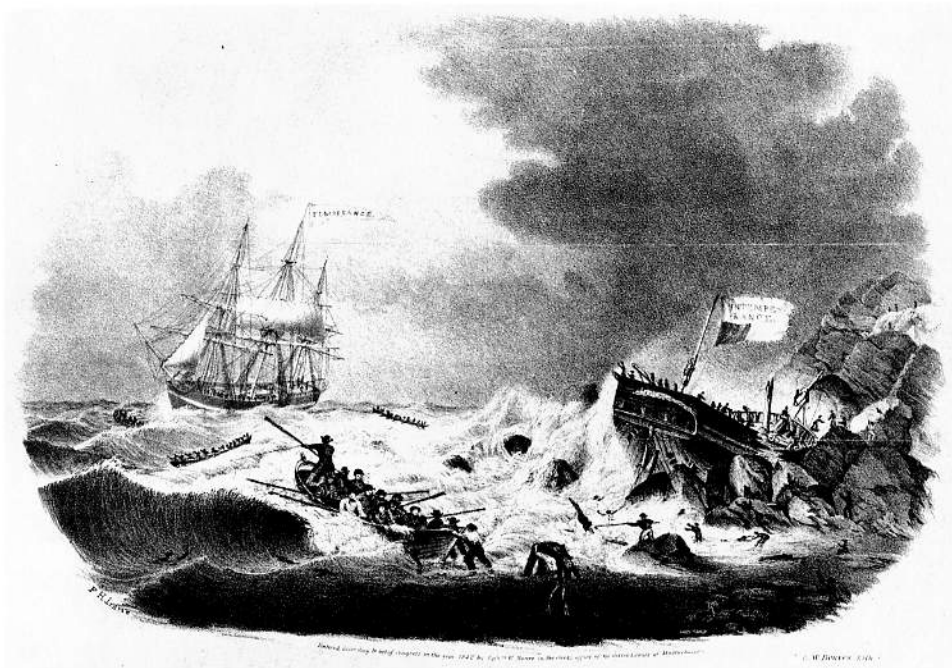
Courtesy, Cape Ann Scientific Literary and Historical Association.



4. Ten Pound Island, Gloucester. Oil, ca. 1840.
Courtesy, Cape Ann Scientific Literary and Historical Association.



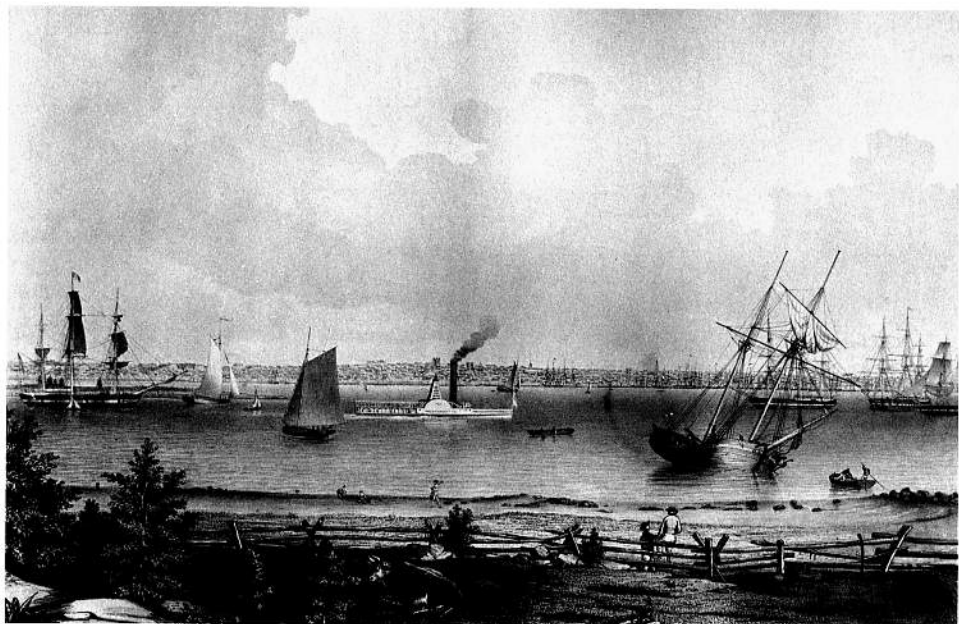
5. View of Boston with Constitution Wharf. Oil, 1841-1842.
Courtesy, Mrs. B. K. Little.



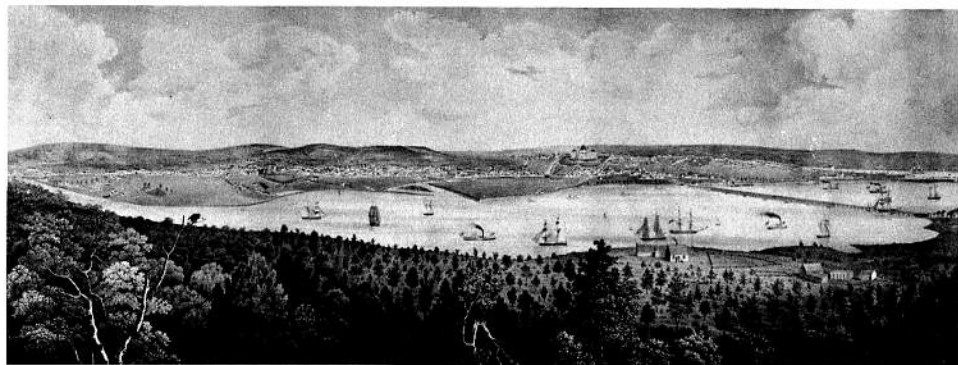
163. Alcohol Rocks. Lithograph Sheet Music Cover, 1842.
Courtesy, Library of Congress.



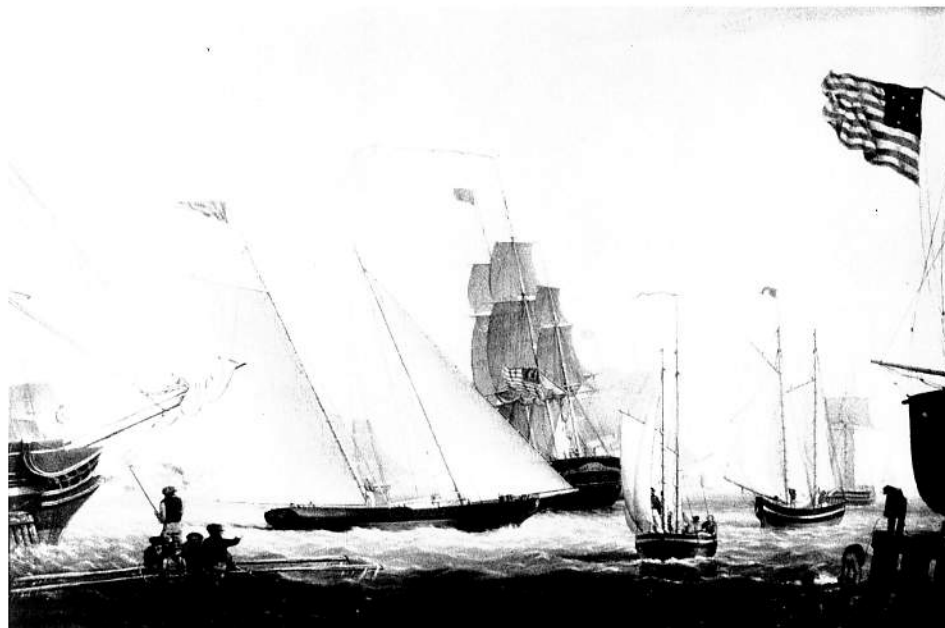
8. View of Gloucester Harbor from Rocky Neck. Oil, 1844.
Courtesy, Cape Ann Scientific Literary and Historical Association.



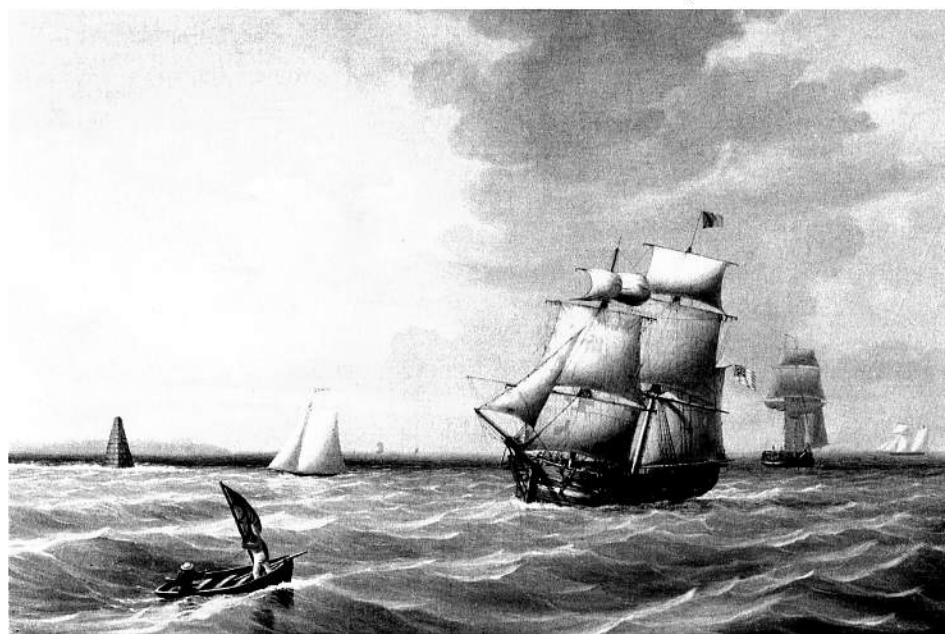
172. View of New Bedford from the Fort near Fair Haven. Lithograph, 1845.
Courtesy, The Mariners Museum.



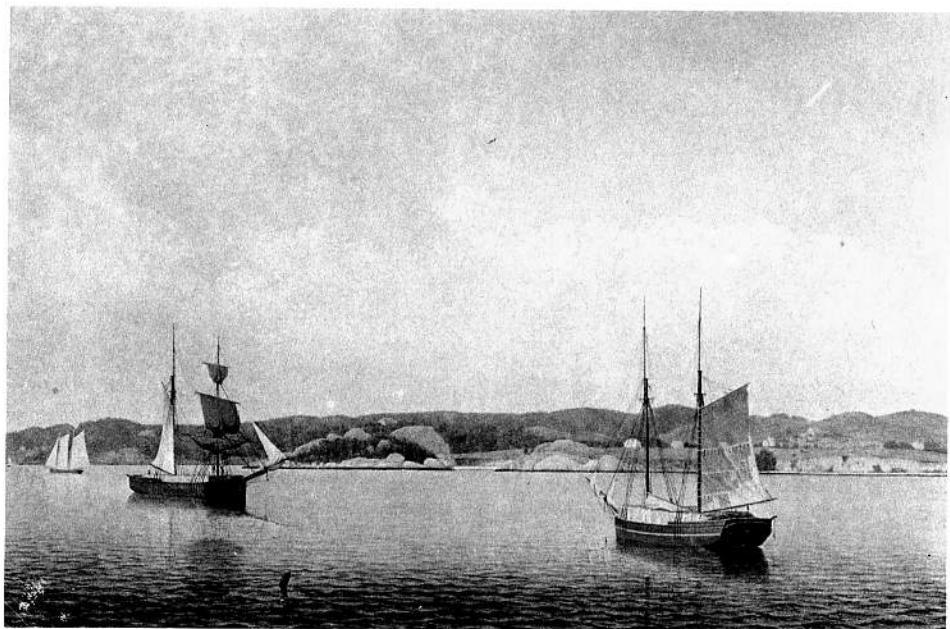
148. View of the City of Washington. Lithograph, 1838.
Courtesy, The Mariners Museum.



9. Yacht *Northern Light* in Boston Harbor. Oil, 1845.
Courtesy, Shelburne Museum.



10. Ships Leaving Boston Harbor. Oil, 1847.
Courtesy, Shelburne Museum.



13. View of Half Moon Beach in Stage Fort Park from Gloucester Harbor.
Oil, ca. 1848.

Courtesy, Cape Ann Scientific Literary and Historical Association.



14. Gloucester Harbor. Oil, 1848.

Courtesy, Richmond Museum of Fine Arts.



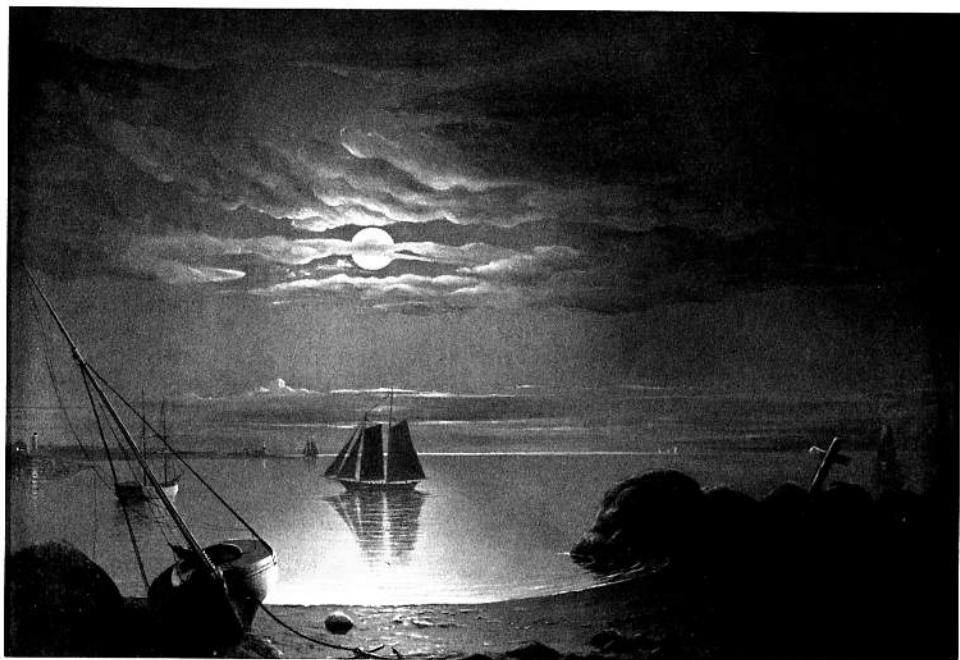
22. Camden Hills, Maine. Oil, ca. 1850.

Courtesy, Francis Hatch, Jr.

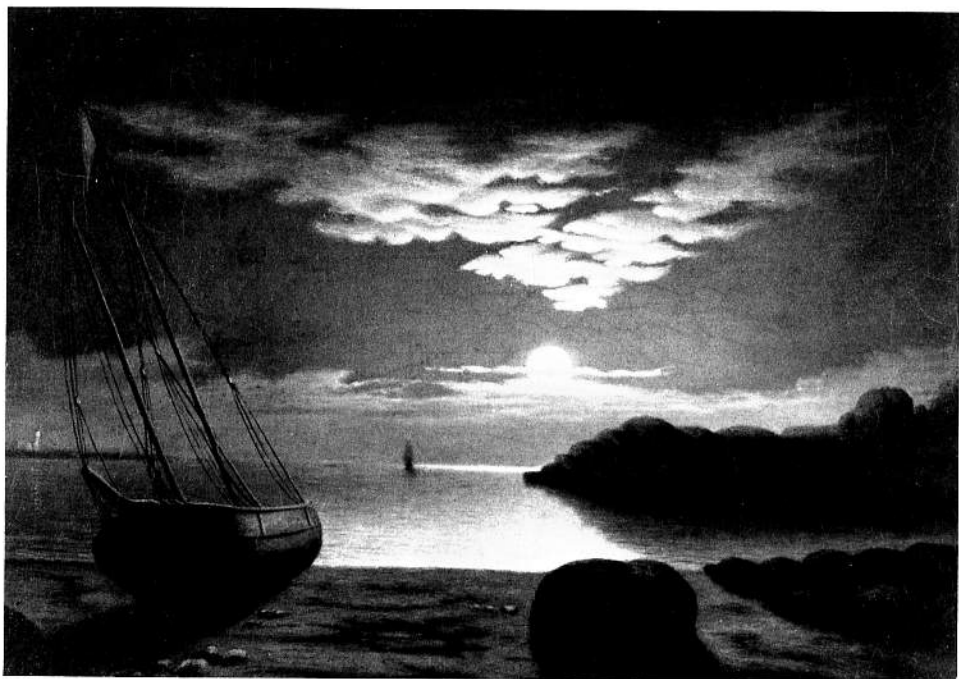


28. Maine Cove at Sunrise. Oil, ca. 1850.

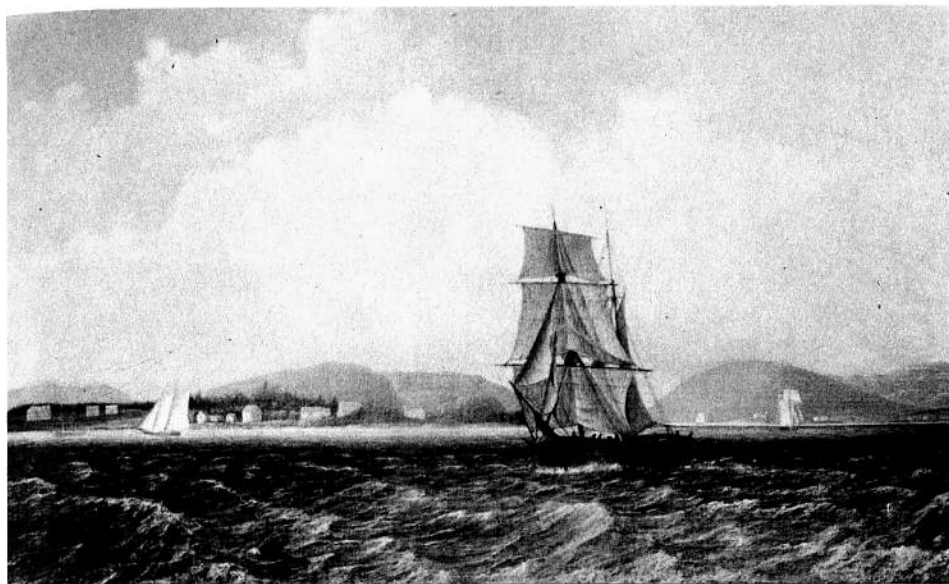
Courtesy, Donald T. Hood.



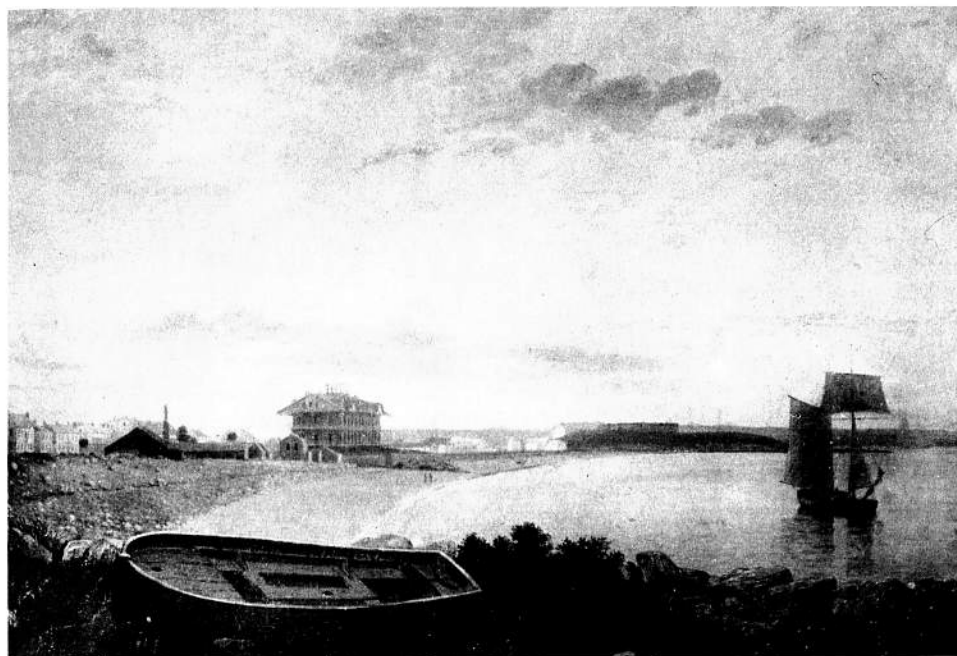
30. Moonlight on a Bay. Oil, ca. 1850.
Courtesy, Shelburne Museum.



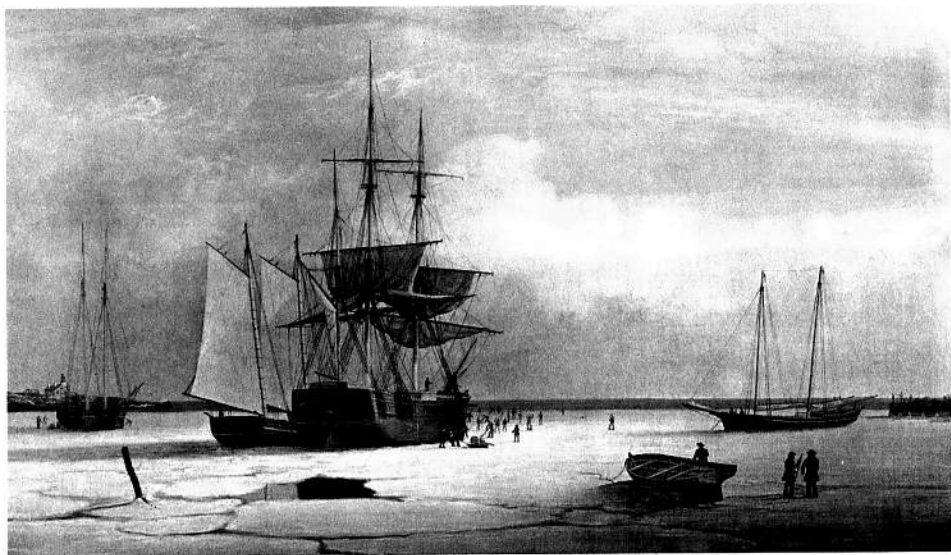
31. Moonlight Scene, Gloucester Harbor. Oil, ca. 1850.
Courtesy, John Wilmerding.



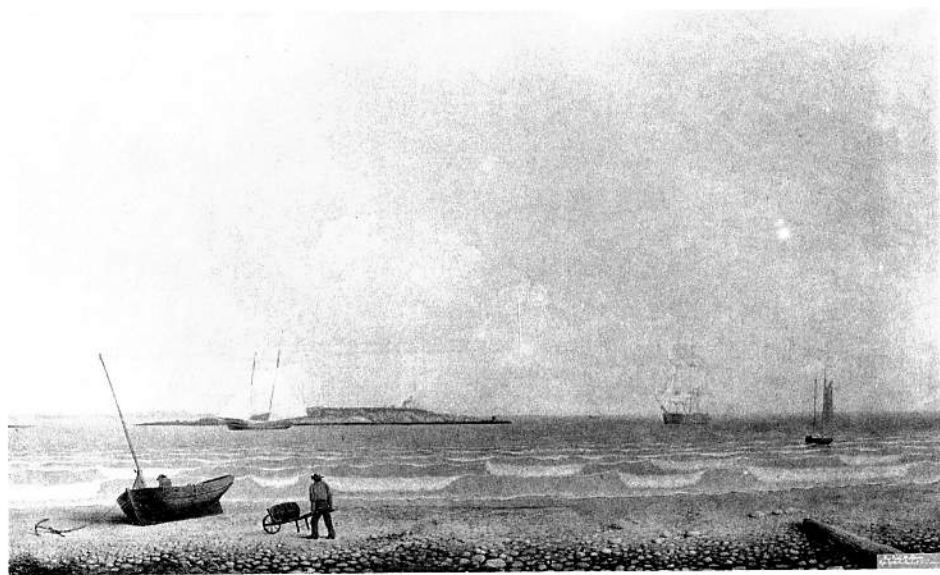
32. Off Mt. Desert Island, Maine. Oil, ca. 1850.
Courtesy, Shelburne Museum.



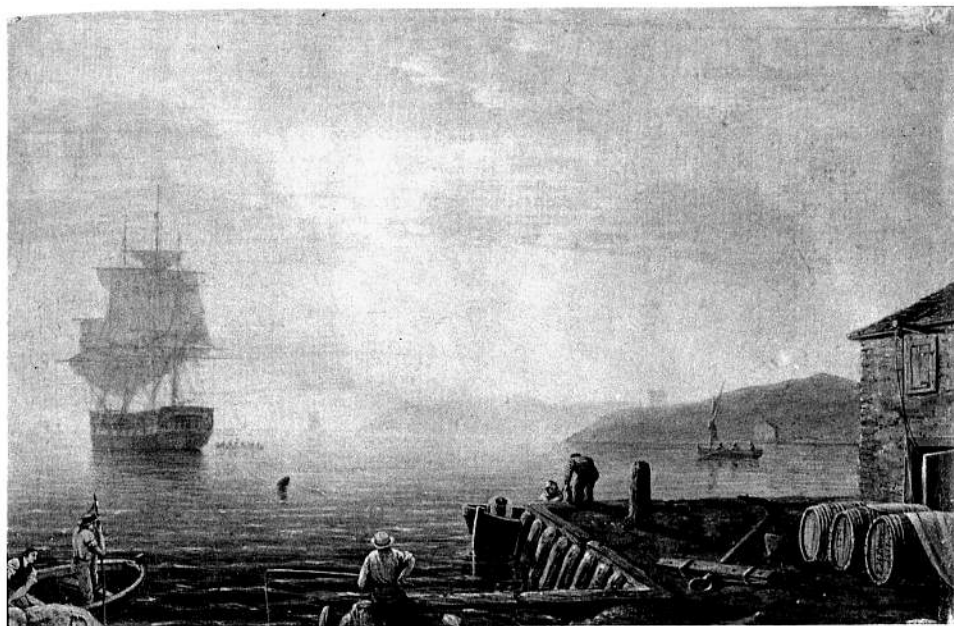
33. Pavilion Beach, Gloucester. Oil, ca. 1850.
Courtesy, Mrs. B. K. Little.



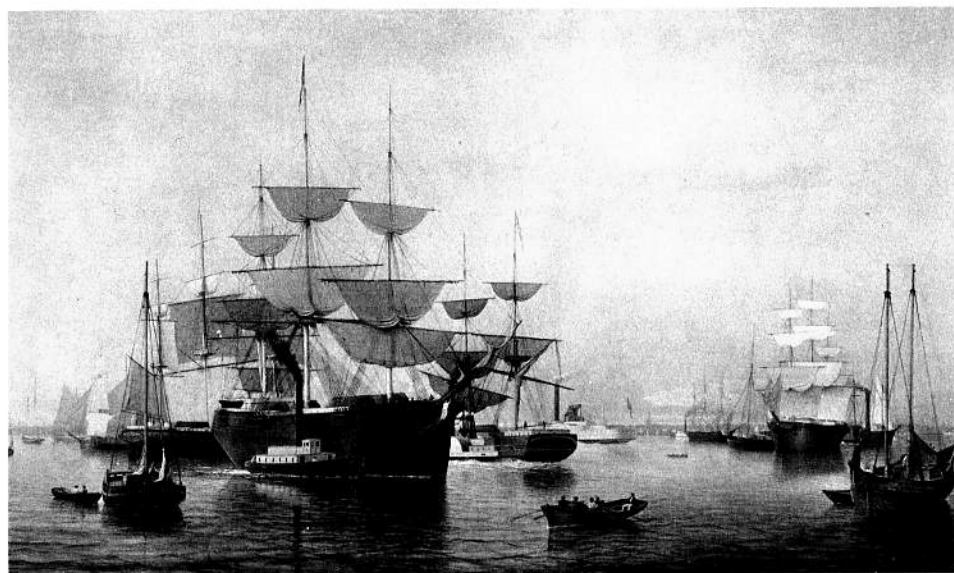
36. Ships in Ice off Ten Pound Island, Gloucester. Oil, ca. 1850.
Karolik Collection, Boston Museum of Fine Arts.



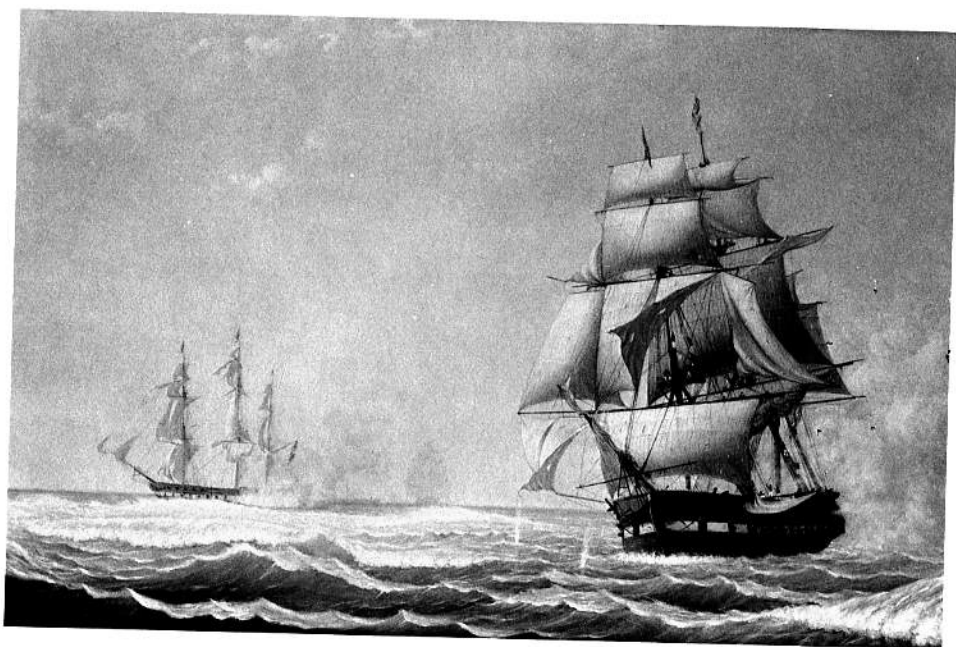
40. Ten Pound Island from Field Beach, Gloucester. Oil, ca. 1850.
Courtesy, Cape Ann Scientific Literary and Historical Association.



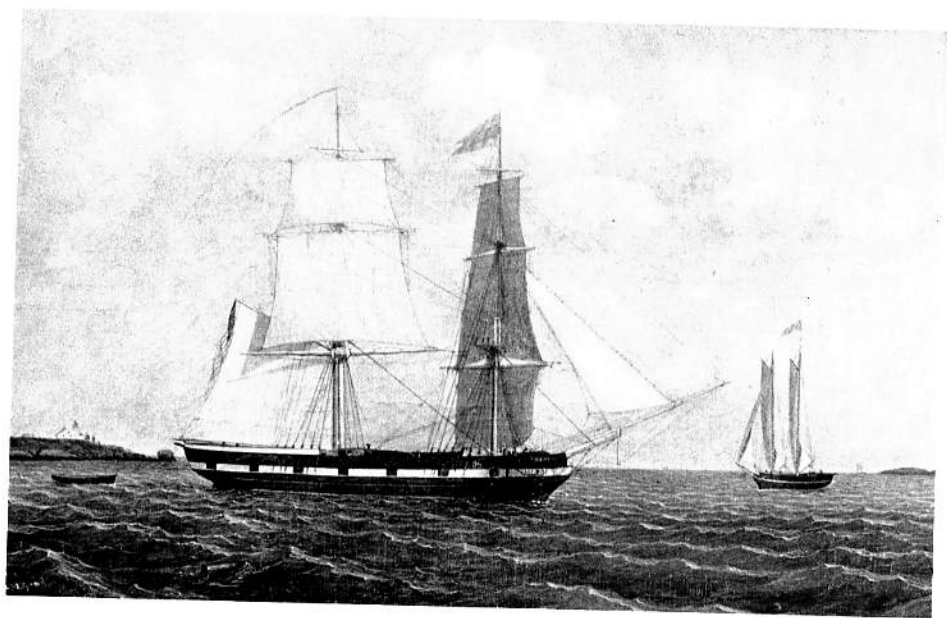
43. Entrance to Gloucester Harbor. Oil, ca. 1850.
Courtesy, Cape Ann Scientific Literary and Historical Association.



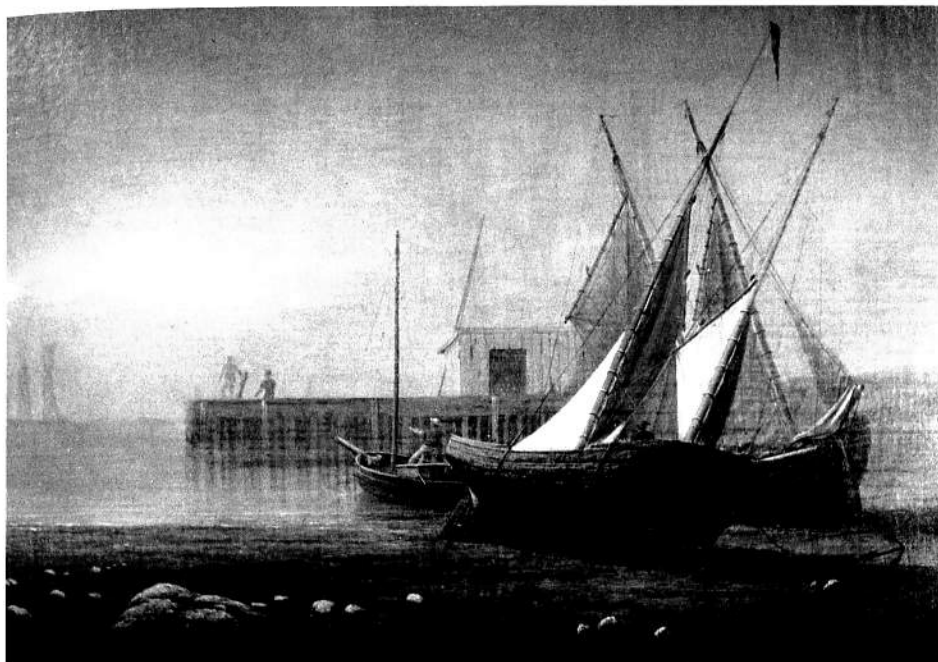
48. New York Harbor. Oil, ca. 1850.
Karolik Collection, Boston Museum of Fine Arts.



50. United States Frigate *President* Engaging a British Squadron, 1815. Oil, ca. 1850.
Courtesy, Lansdell K. Christie Collection, Corcoran Gallery of Art.

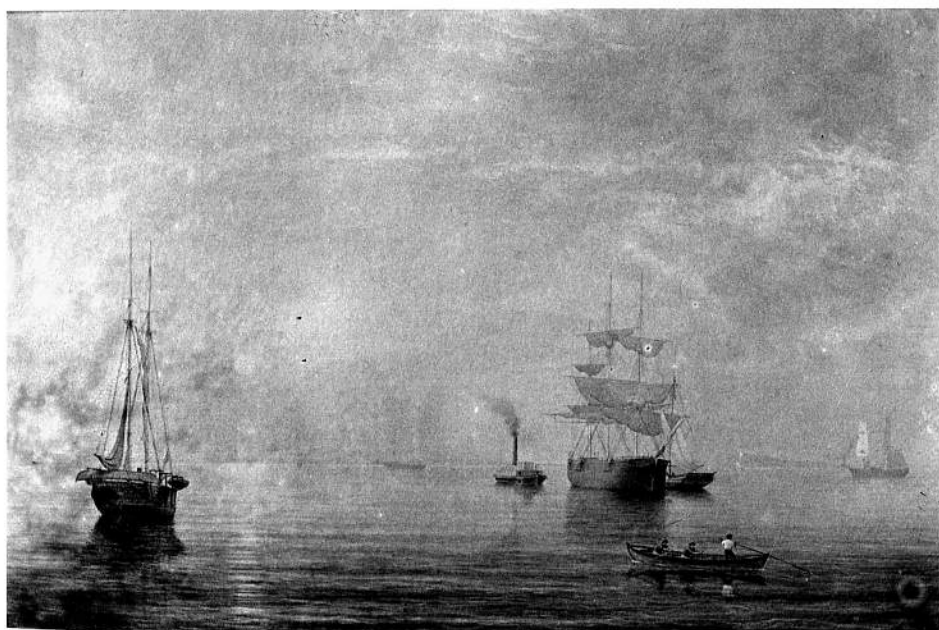


71. The *Cadet* in Gloucester Harbor. Oil, ca. 1850.
Courtesy, Cape Ann Scientific Literary and Historical Association.

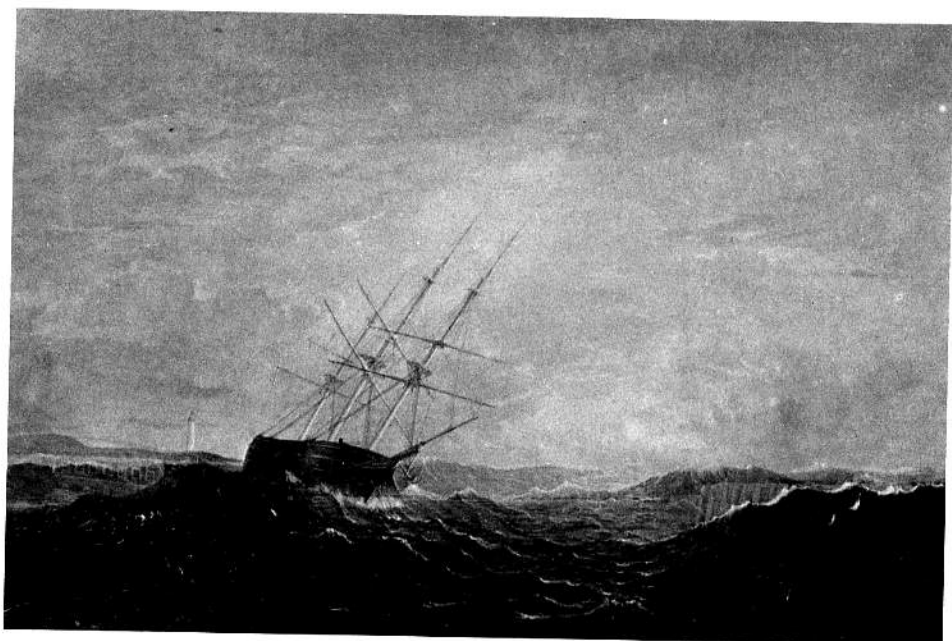


850.

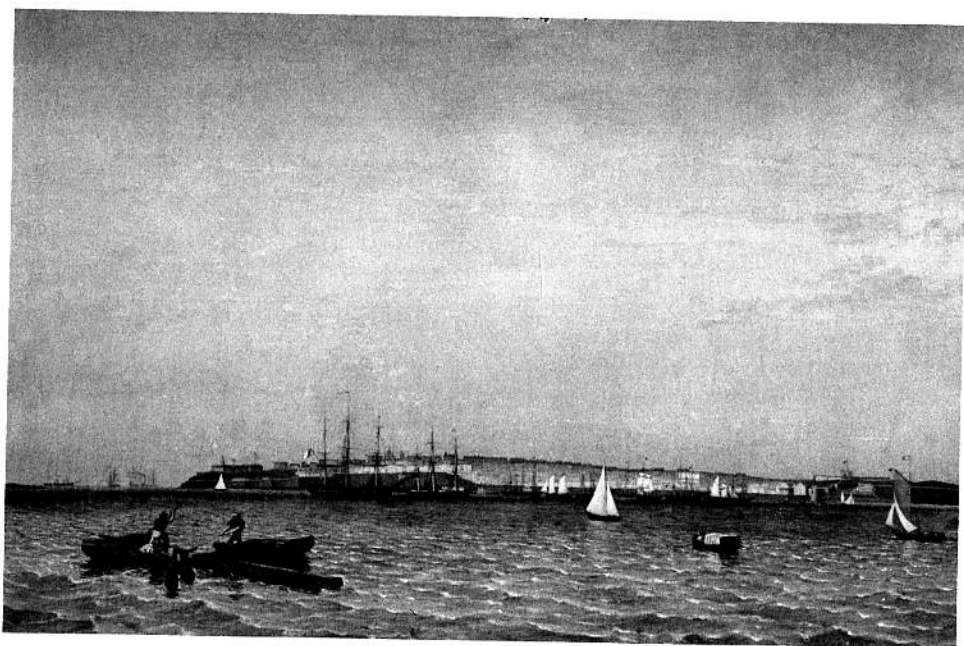
73. Fishing Boats at Low Tide. Oil, ca. 1850.
Addison Gallery of American Art.



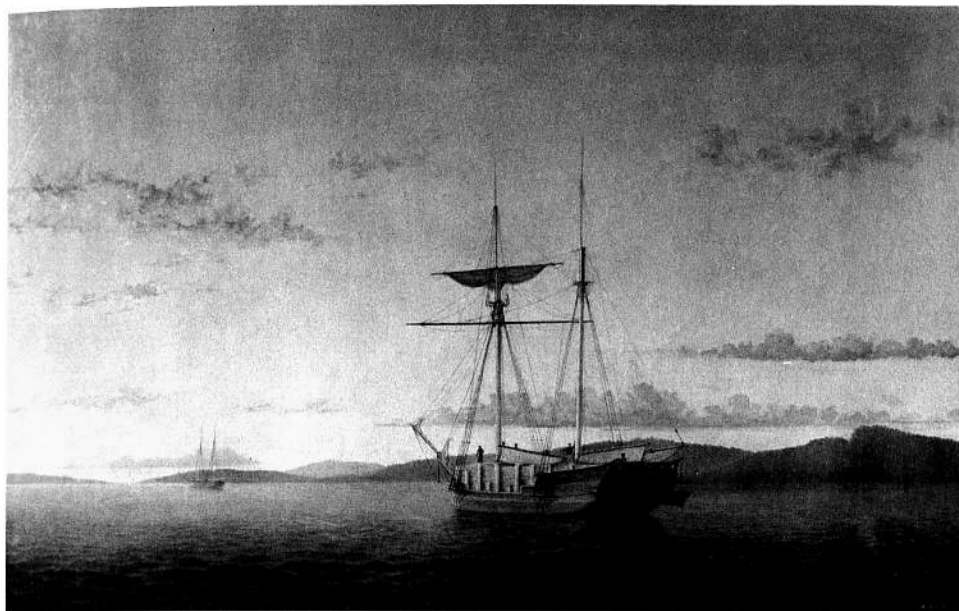
83. A Calm Sea. Oil, ca. 1855.
Cape Ann Scientific Literary and Historical Association.



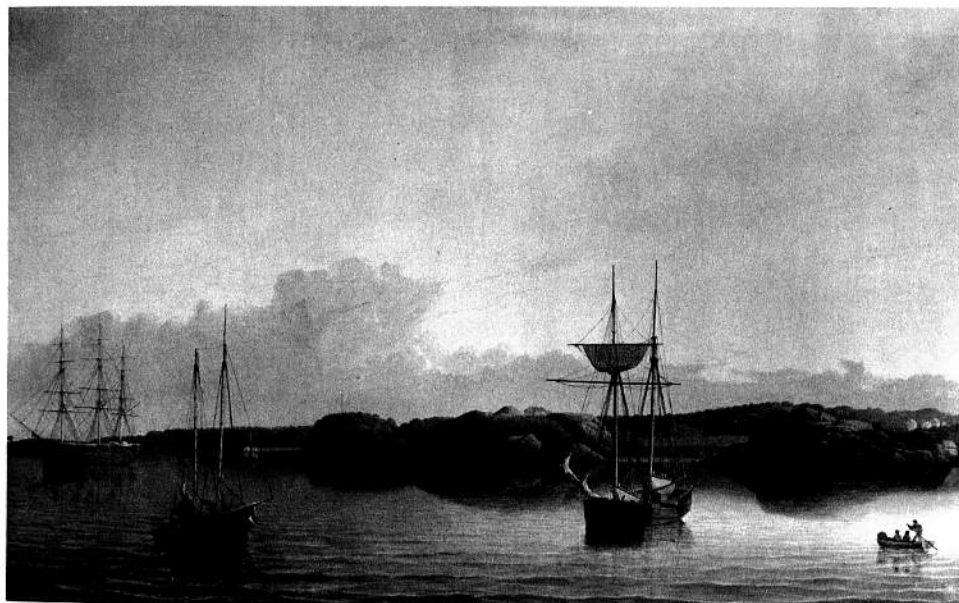
85. A Rough Sea. Oil, ca. 1855.
Cape Ann Scientific Literary and Historical Association.



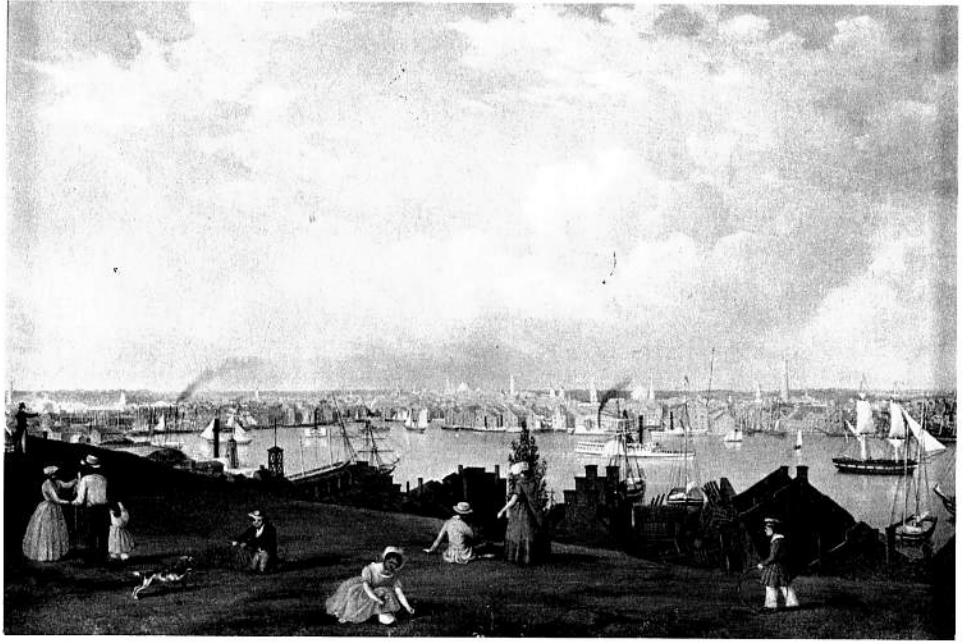
86. St. Johns, Porto Rico. Oil, ca. 1855.
Courtesy, Mariners Museum.



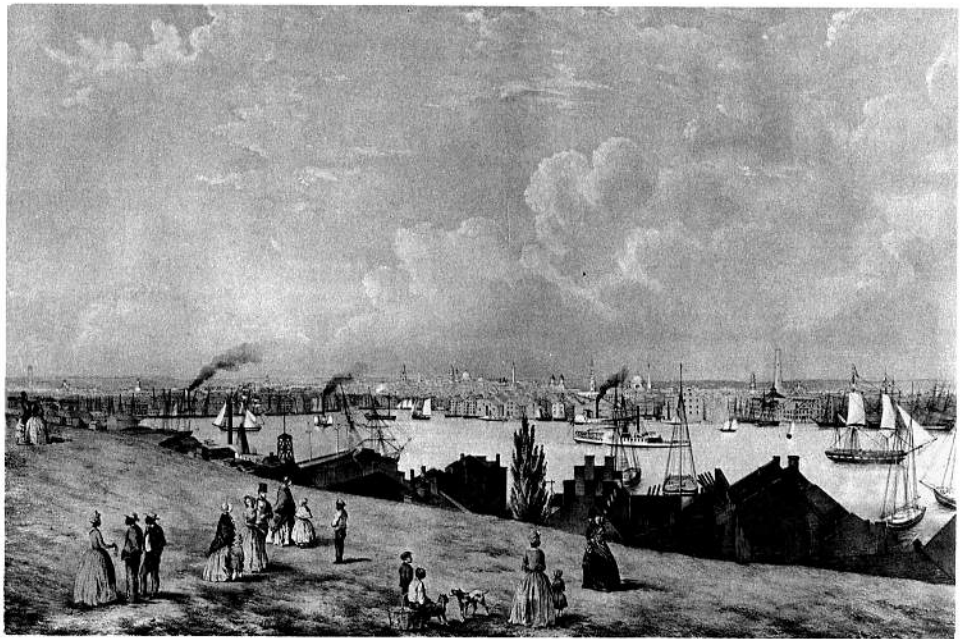
97. Twilight on the Kennebec. Oil, ca. 1860.
Courtesy, Francis Hatch.



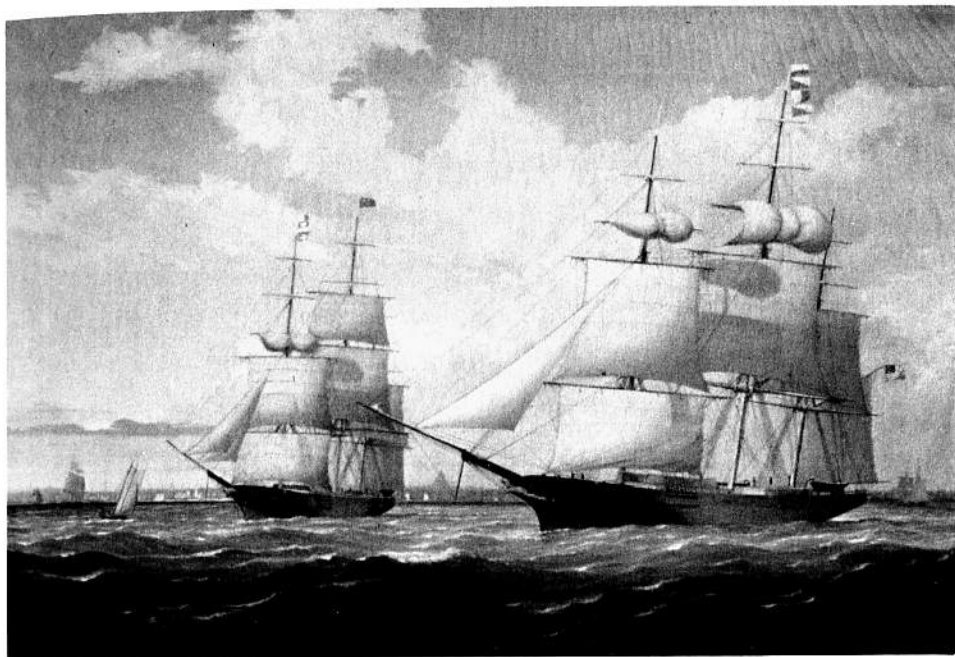
98. A View of Gloucester Shore Line. Oil, ca. 1860.
Courtesy, John Wilmerding.



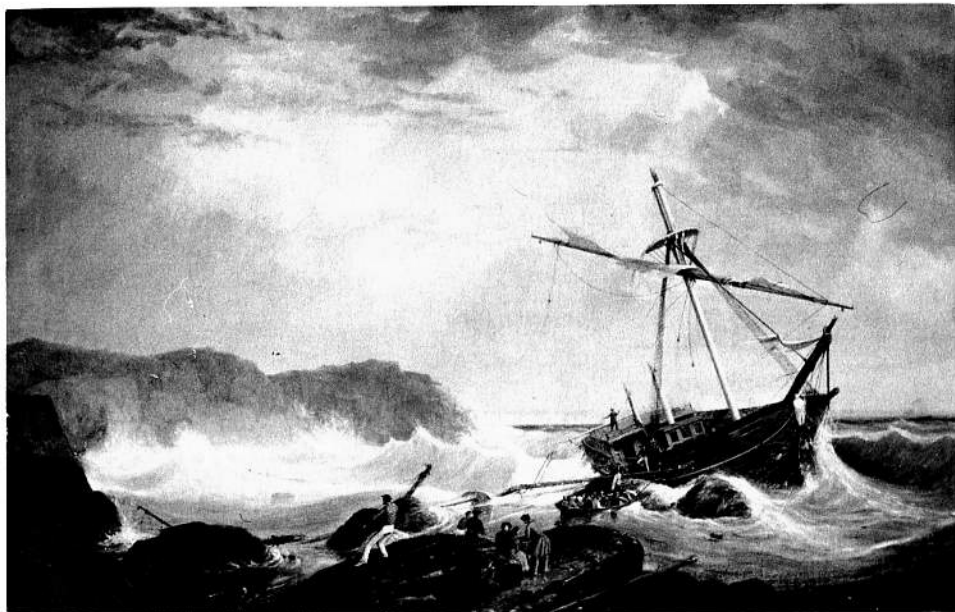
44. View of Baltimore. Oil, ca. 1850.
Courtesy, Shelburne Museum.



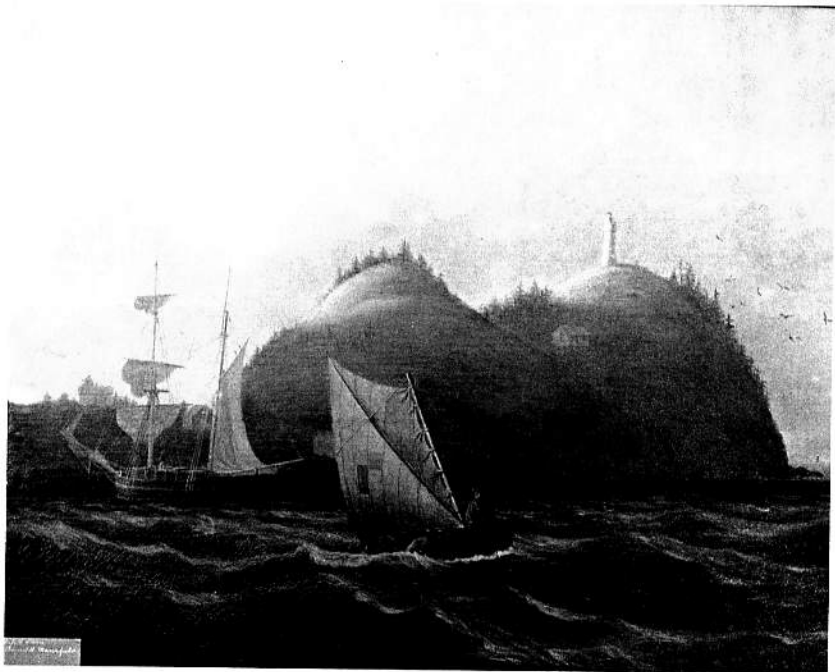
174. View of Baltimore from Federal Hill. Lithograph, ca. 1850.
Courtesy, Enoch Pratt Free Library, Baltimore.



66. Ship *Winged Arrow* in Boston Harbor. Oil, 1852.
Courtesy, Sargent M. G. Hough House, Gloucester.

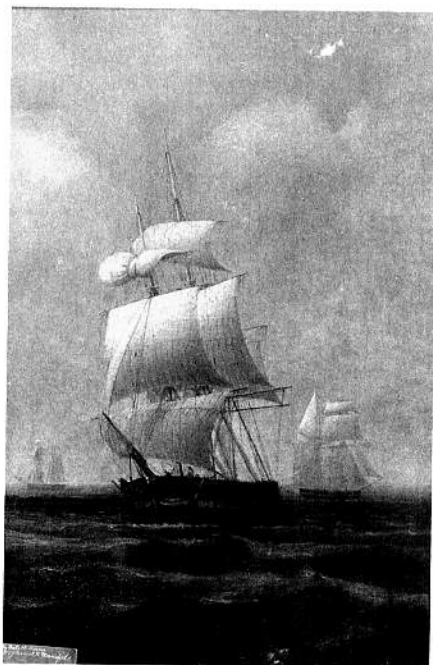


67. Ship Wreck on Lee Shore. Oil, 1852.
Courtesy, John Wilmerding.



64. Off Owl's Head, Maine. Oil, 1852.

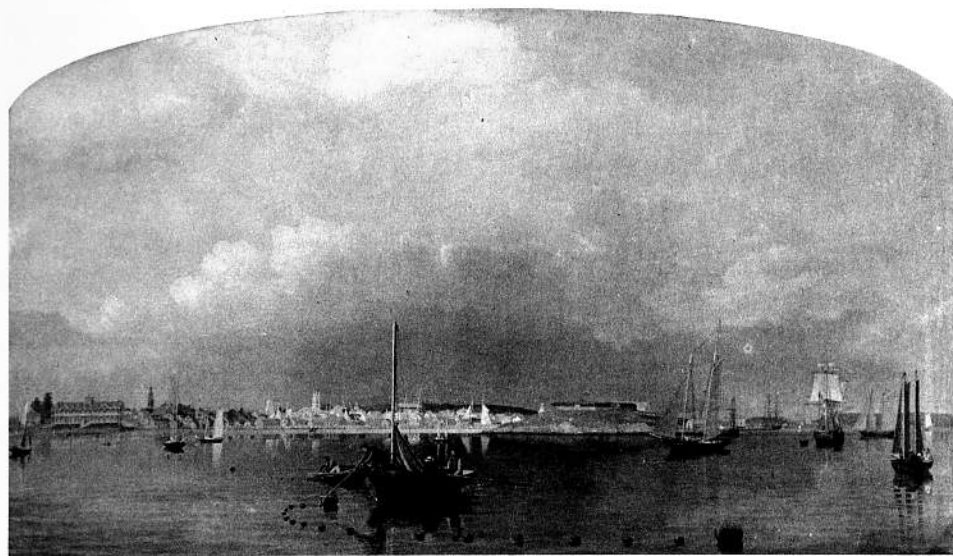
Courtesy, Cape Ann Scientific Literary and Historical Association.



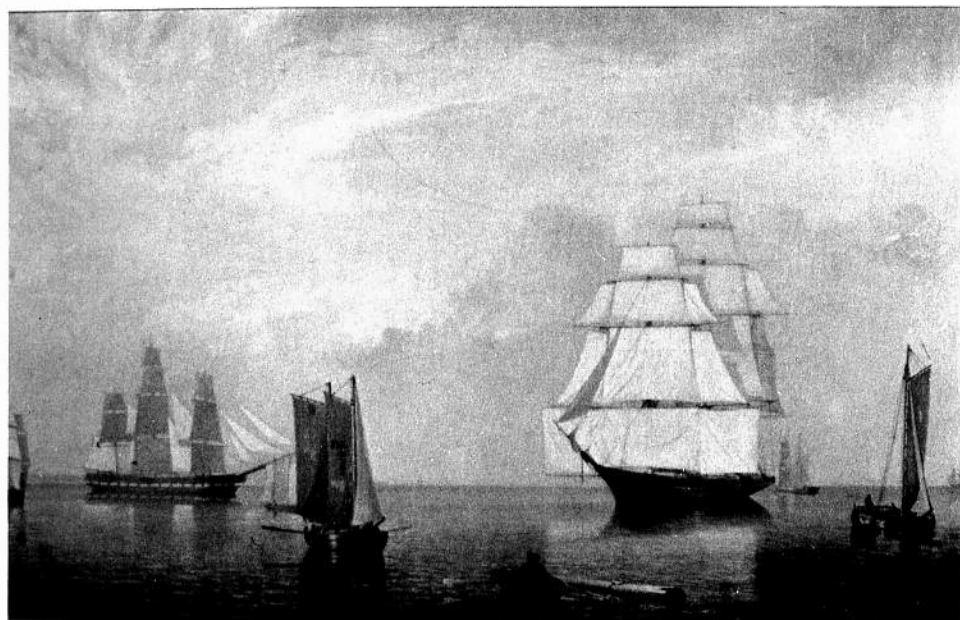
69. Three-master. Oil, 1852.

These two were originally one painting.

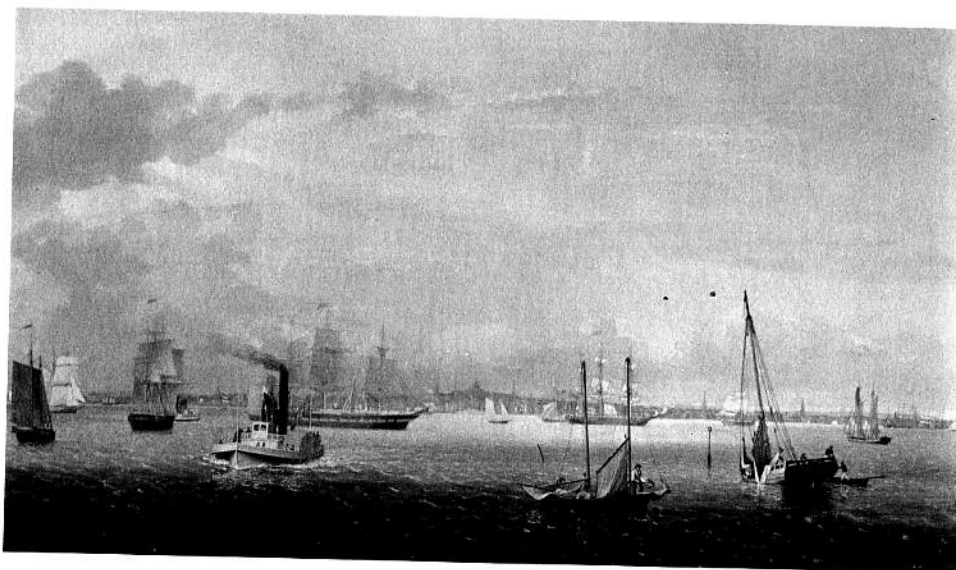
Courtesy, Cape Ann Scientific Literary and Historical Association.



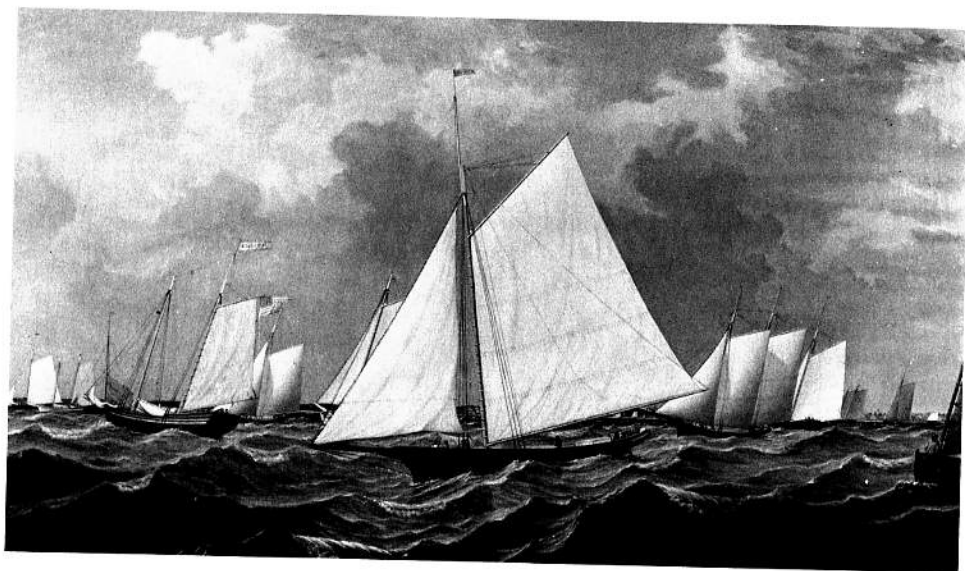
70. View of Gloucester in 1852. Oil, 1852.
Courtesy, Cape Ann Scientific Literary and Historical Association.



78. Salem Harbor. Oil, 1853.
Courtesy, Karolik Collection, Boston Museum of Fine Arts.



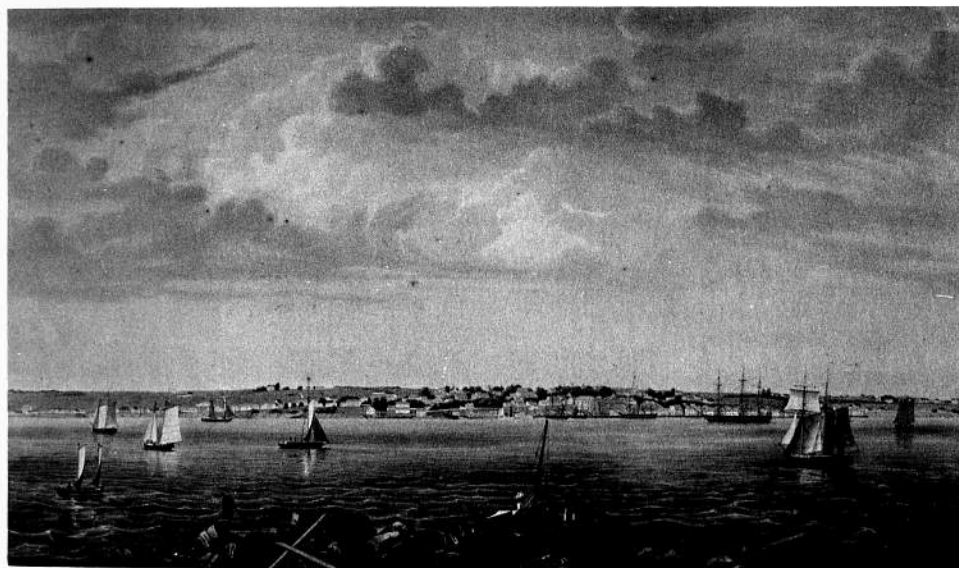
79. Boston Harbor. Oil, 1854.
Courtesy, The White House.



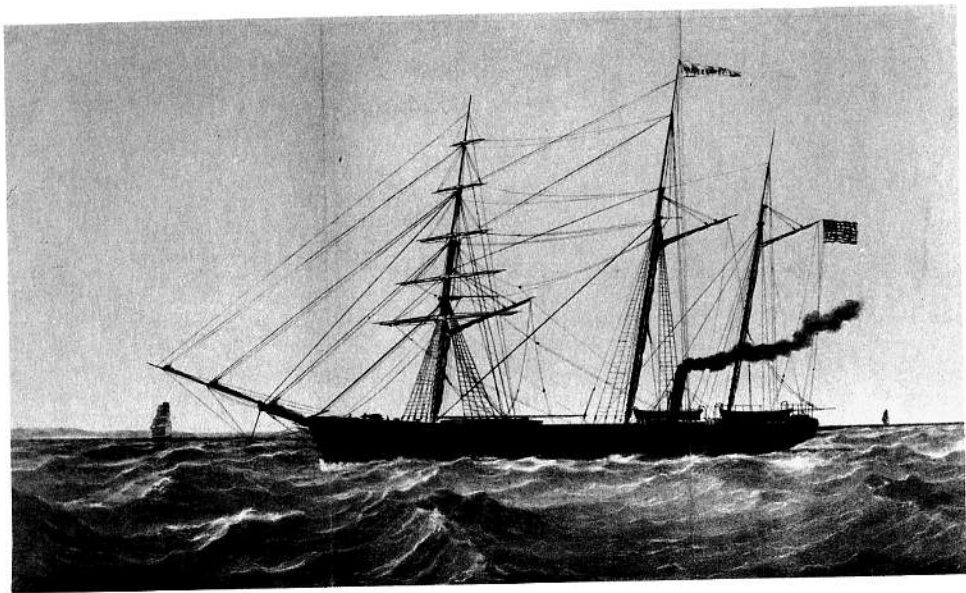
80. New York Yacht Club Regatta. Oil, 1854.
Courtesy, Shelburne Museum.



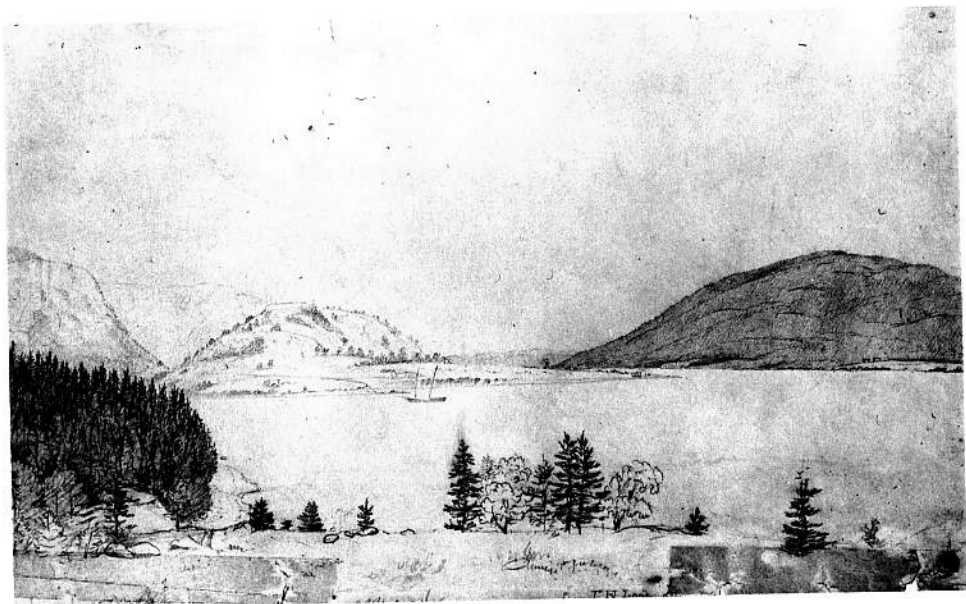
88. Three-master on the Gloucester Railway. Oil, 1855.
Courtesy, Cape Ann Scientific Literary and Historical Association.



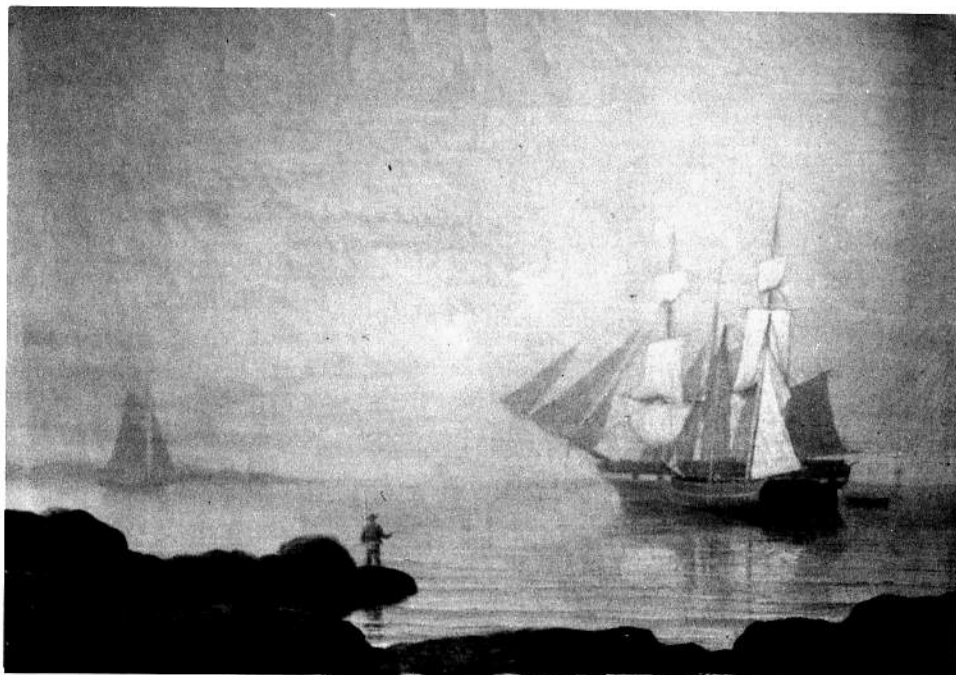
176. Castine from Hospital Island. Lithograph, 1855.
Courtesy, Mariners Museum.



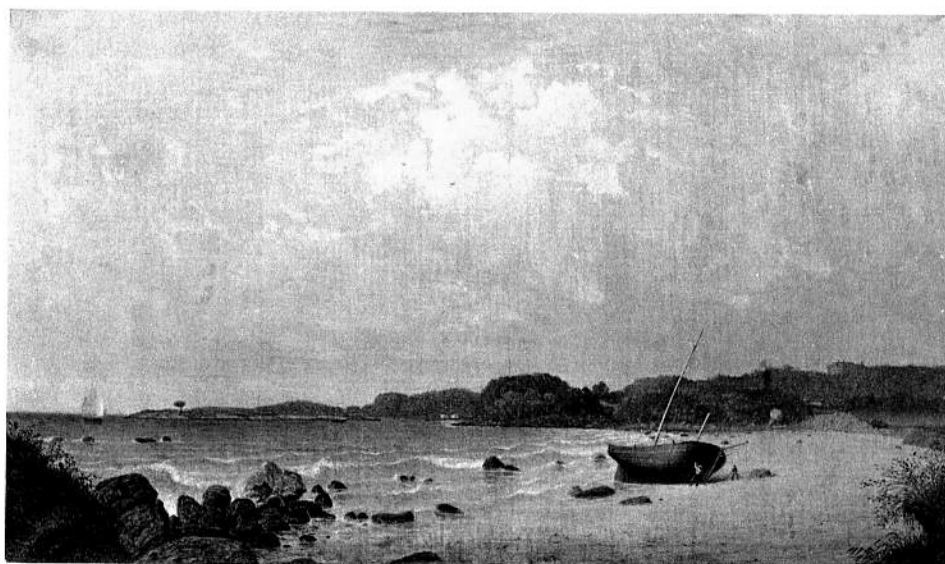
177. Steam Demi Bark *Antelope*. Lithograph, 1855.
Courtesy, Mariners Museum.



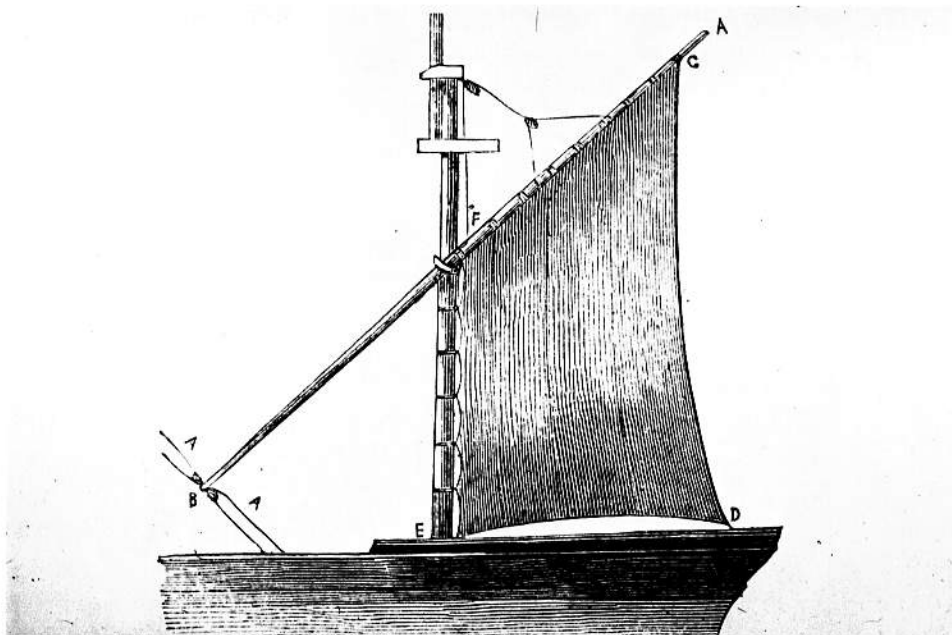
216. Entrance of Some Sound, from Back of the Island House. Pencil, 1855.
Courtesy, Cape Ann Scientific Literary and Historical Association.



102. Beverly Harbor. Oil, ca. 1860.
Courtesy, Francis Hatch.



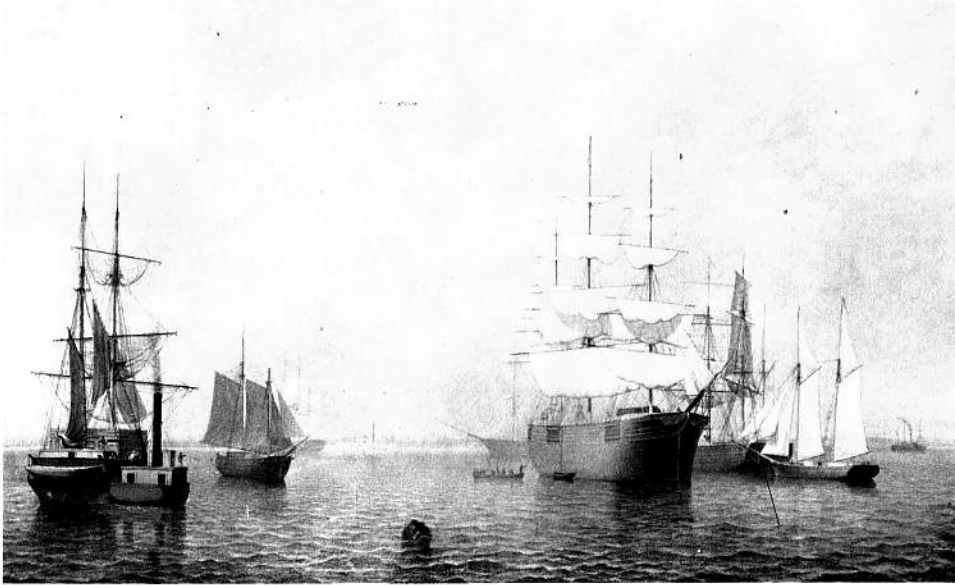
103. Dolliver's Neck and the Western Shore from Field Beach. Oil, ca. 1860.
Courtesy, Cape Ann Scientific Literary and Historical Association.



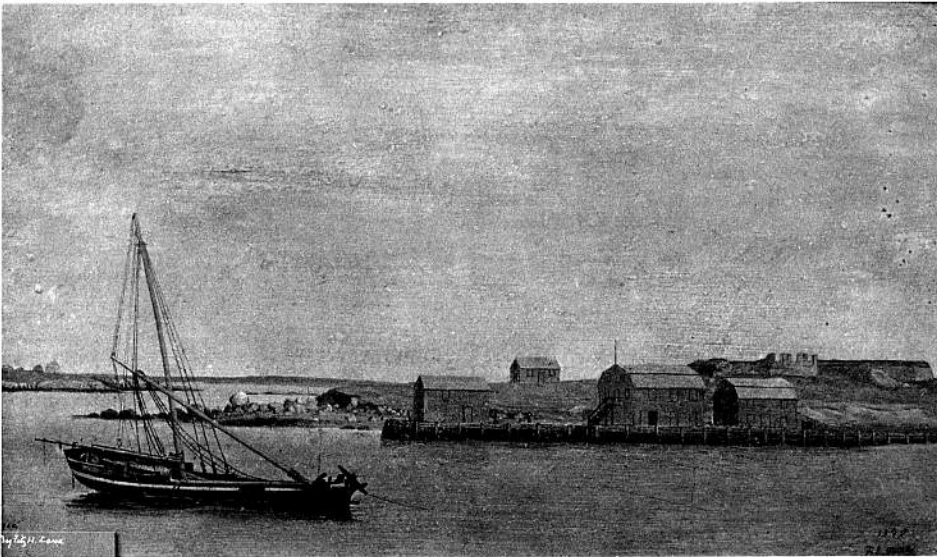
180. Illustration of Fore-and-Aft Sail on Mizzen Mast. Wood engraving, ca. 1860.
From Babson, History of Gloucester.



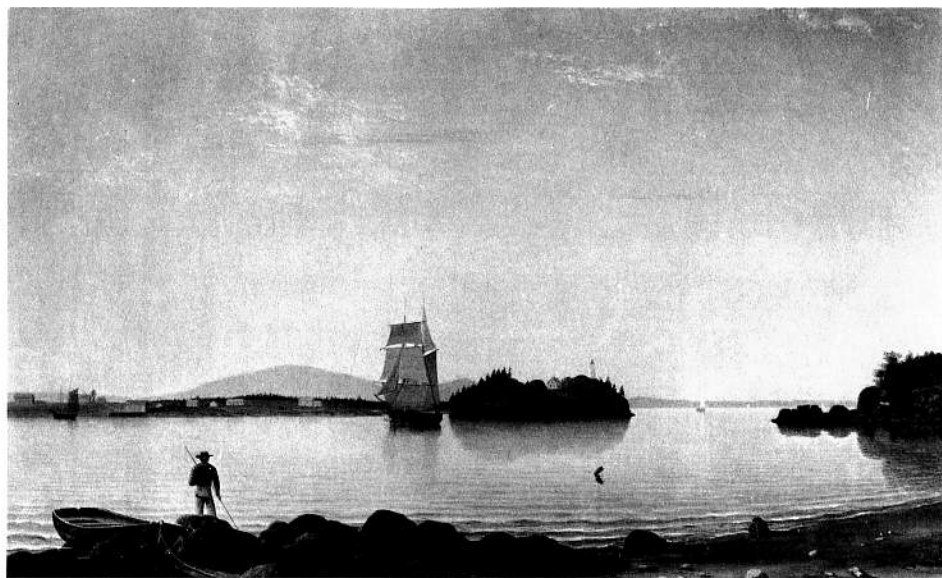
106. Gloucester Harbor. Oil, 1862.
Private Collection.



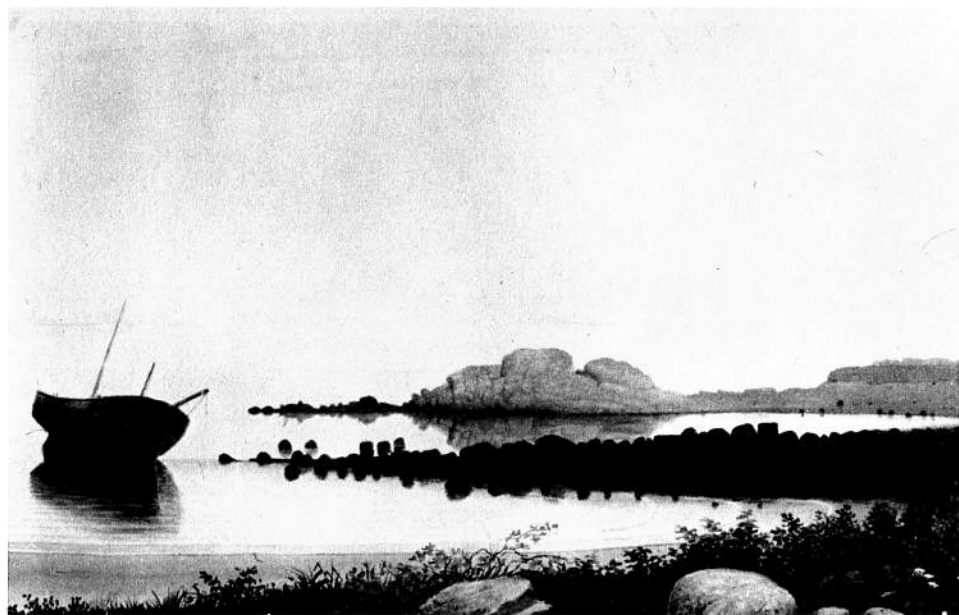
108. Merchantmen off Boston Harbor. Oil, 1862.
Courtesy, Shelburne Museum.



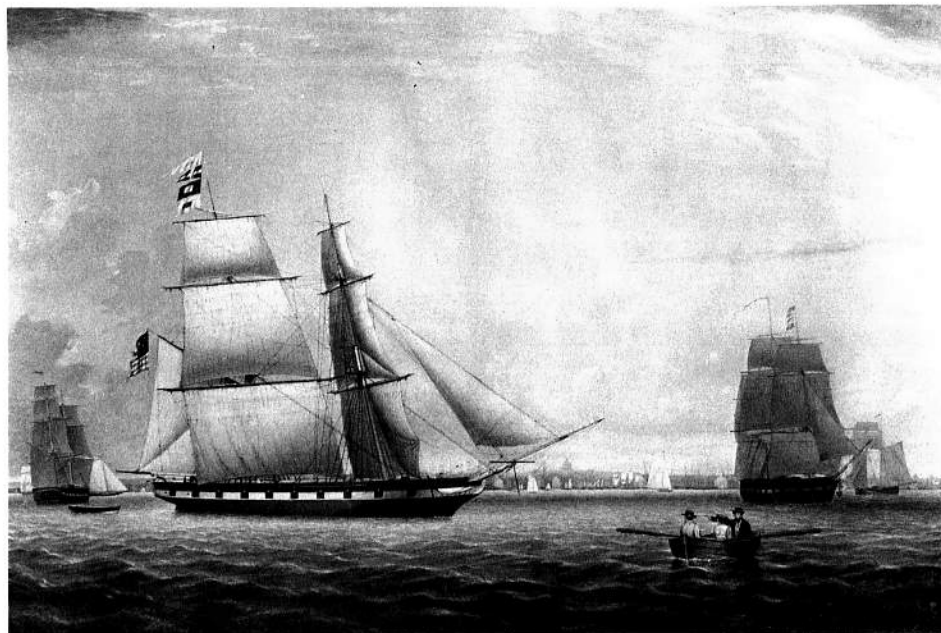
109. The Old Fort, Gloucester. Oil, 1862.
Courtesy, Cape Ann Scientific Literary and Historical Association.



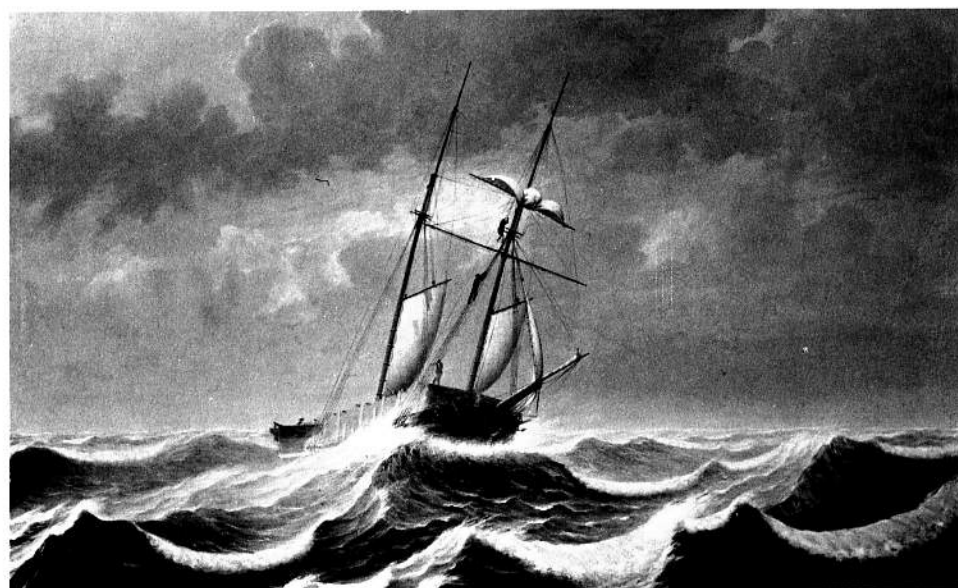
110. Owl's Head, Penobscot Bay, Maine. Oil, 1862.
Courtesy, Karolik Collection, Boston Museum of Fine Arts.



113. Brace's Rock, Eastern Point, Gloucester. Oil, ca. 1863.
Courtesy, Karolik Collection, Boston Museum of Fine Arts.



114. Brig *Antelope* in Boston Harbor. Oil, 1863.
Courtesy, Karolik Collection, Boston Museum of Fine Arts.



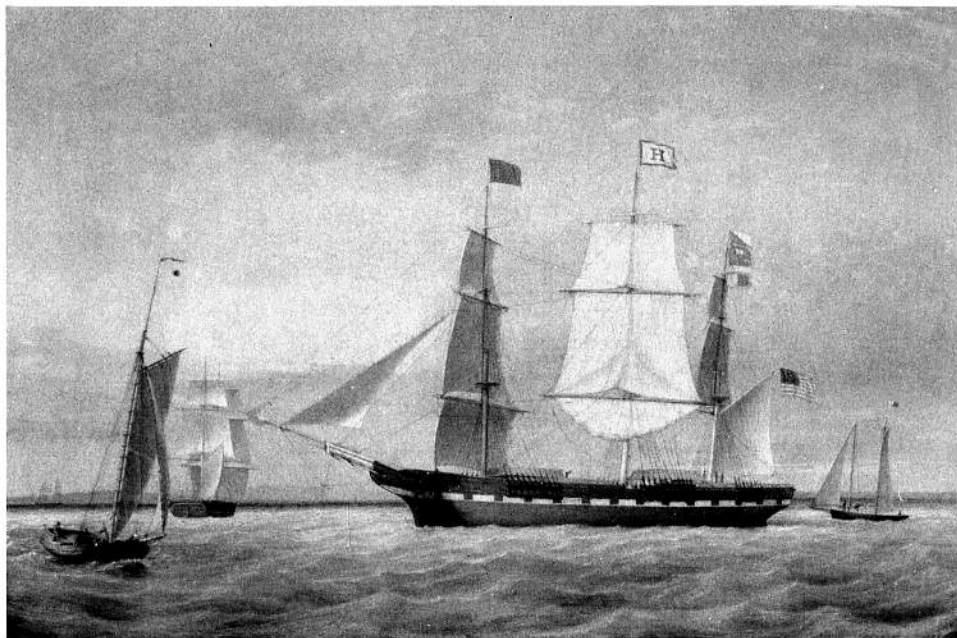
115. Lumber Schooner in a Gale. Oil, 1863.
Courtesy, John Wilmerding.



117. View of the Babson and Ellery Houses, Gloucester. Oil, 1863.
Courtesy, Cape Ann Scientific Literary and Historical Association.



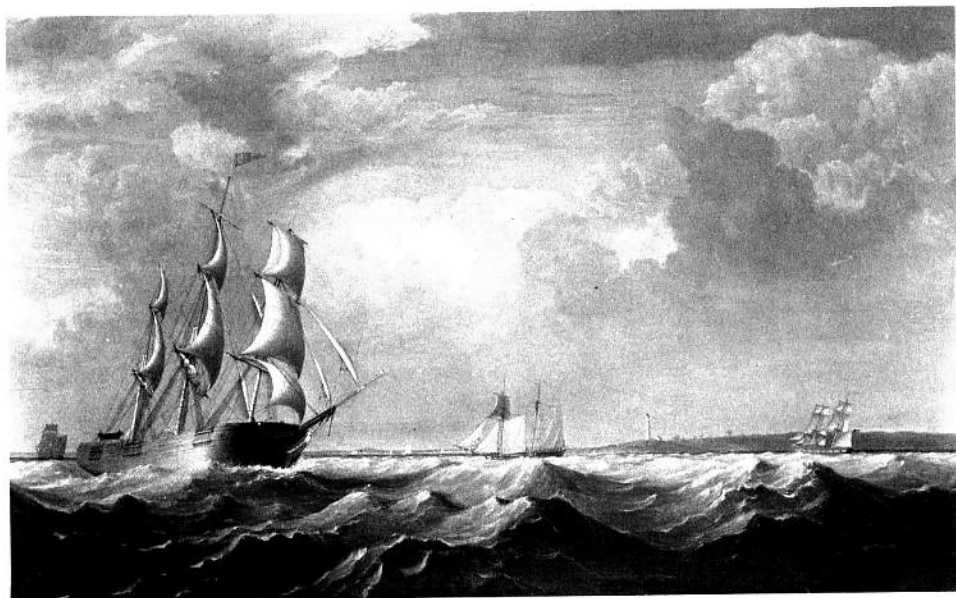
6. Cunard Liner, *Britannia*. Oil, 1842.
Courtesy, Higginson Collection, Peabody Museum of Salem.



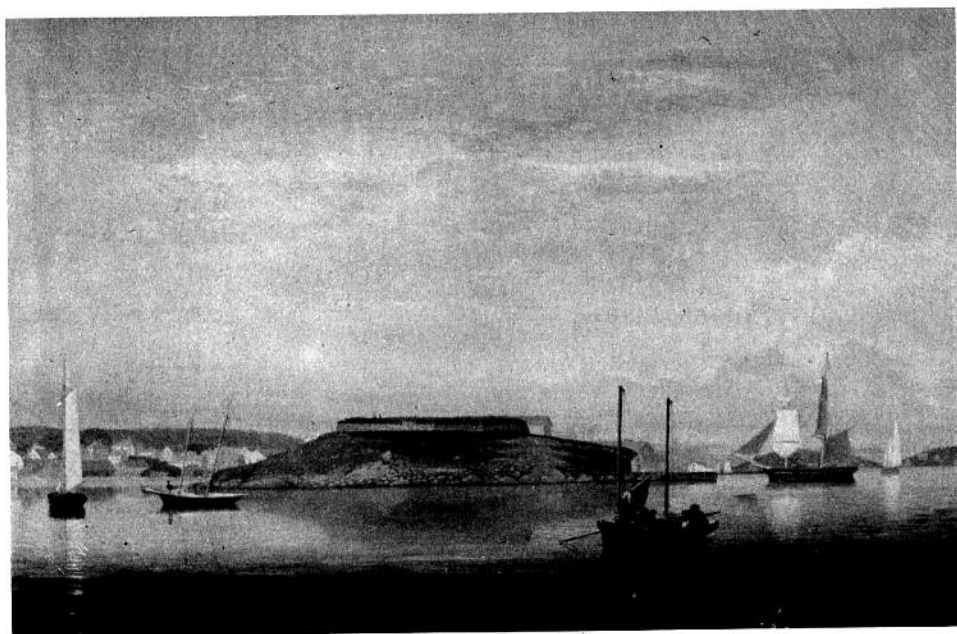
58. Ship *Samuel Lawrence*. Oil, 1851.
Courtesy, Peabody Museum of Salem.



126. Gloucester from Brookbank. Oil, undated.
Courtesy, Karolik Collection, Boston Museum of Fine Arts.



134. Ships off Cape Ann. Oil, undated.
Courtesy, The Old Print Shop, New York.



138. Watch House Point. Oil, undated.
Courtesy, Sargent M. G. Hough House, Gloucester.